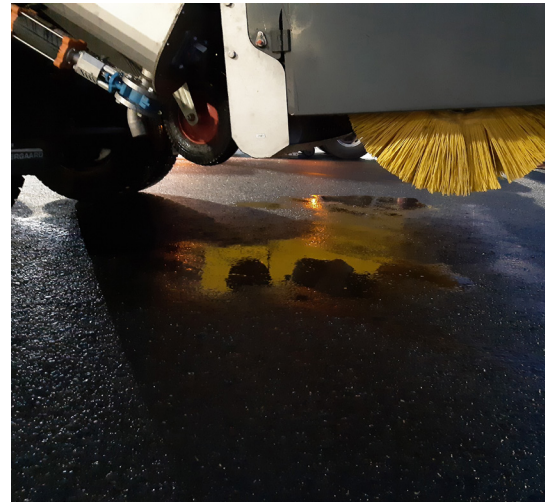


# GRV

## GLYCOL RECOVERY VEHICLE



**Vestergaard Company's Glycol Recovery Vehicle (GRV) has been developed to handle the important task of minimizing environmental impact of spent deicing fluid**

The GRV is a specialized vehicle to efficiently collect slush and water containing spent deicing fluid. Collecting deicing fluids efficiently helps protect the environment and can form the basis for recycling the glycol.

### **Efficiency and low maintenance**

The GRV sweeps up water/slush into a trough and moves it to the tank by screw conveyors. The screw conveyors are robust and very efficient, so no vacuum is needed. Broom suspension is especially designed to optimize surface contact and extending the lifetime of the brushes ensuring low maintenance.

### **Easy, safe and clean**

The hopper is specially designed for liquid,

containing snow. With a sloped tank and a bottom outlet of 300mm, dumping can be easily done without leaving the operators cabin. An easy, safe and clean job for the operators.

### **Low fuel consumption**

Fuel consumption of the Vestergaard GRV is reduced over 50% compared to conventional vacuum sweepers. The consumption is kept low as the GRV has no need for auxiliary engines and thus requires less energy. Optionally delivered on e-chassis.

### **Light weight, fast and maneuverable**

Not needing a vacuum fan and an auxiliary engine, the GRV is light weight, making it possible to offer a capacity of 12,000 liters on a single rear axle chassis with a short wheelbase. The result is a vehicle which is both fast and very maneuverable.

## MAJOR ADVANTAGES

- » **Sloped tank section for easy and efficient dumping**
- » **More than 50% fuel consumption reduction**
- » **Safe and clean operating environment**
- » **Low maintenance**
- » **Easy maneuverable**
- » **Short vehicle and low weight**

### COMPANY

## VESTERGAARD

For questions and requests for further information please contact:

### **Vestergaard Company A/S**

Skullebjerget 31 • Gevninge  
DK-4000 Roskilde • Denmark  
Tel: +45 4642 2222  
sales@vestergaardcompany.com  
www.vestergaardcompany.com

### **Vestergaard Company Inc.**

1903 W. Rte. 120  
McHenry, IL 60051 • USA  
Tel: +1 815 759-9102  
Toll free: +1 888 759-9118  
usa@vestergaardcompany.com

### **Vestergaard Company SASU**

Bâtiment 3450 A, 4, Rue du Té  
93290 Tremblay-en-France • France  
Tel.: +33 1 30 34 55 87  
france@vestergaardcompany.com

### **Vestergaard Company Ltd.**

21/46 Moo 10,  
Nongkham, Sriracha,  
Chonburi 20230 • Thailand  
Tel: +66 33 265769  
asia@vestergaardcompany.com

Caution: Specifications are advisory only, and will vary. Please request exact data.

# GRV

## GLYCOL RECOVERY VEHICLE

### TECHNICAL SPECIFICATIONS

- Tank/hopper capacity 12.000L
- Working speed: up to 15km/h
- Sweeping path 2400mm
- Tank/hopper outlet diameter 300mm
- Chassis: Volvo FE 280, Euro 6 Wheelbase: 3900mm
- Turning diameter, curb to curb: 14.0m
- Estimated lifetime of brushes 300-500 hours
- Manhole cover in side of the tank

